

# INTERNATIONAL PROGRAMS FOR STUDENTS



TEXAS A&M UNIVERSITY

## STATISTICAL REPORT FALL 2004

INTERNATIONAL STUDENT SERVICES  
STUDY ABROAD PROGRAMS OFFICE  
SPONSORED STUDENT PROGRAMS  
SANTA CHIARA STUDY CENTER

Available online at:  
<http://international.tamu.edu/ipo/ips.html>

Compiled By  
*Staford François*  
[sfrancois@ipomail.tamu.edu](mailto:sfrancois@ipomail.tamu.edu)  
Graduate Assistant, IPS

## Executive Summary

The global economy of the 21<sup>st</sup> century requires university graduates to function effectively in an international environment. Recognizing this need, Texas A&M University provides many opportunities for students to gain international education experience and for faculty, who inspire these students, to research and teach abroad. Texas A&M is also committed to providing a welcoming environment for its international students, faculty and visiting scholars.

Texas A&M University's long history of international involvement has created a solid foundation for future plans to make Texas A&M one of the top ten public universities in the country, as outlined in the long-range planning document, *Vision 2020*. Texas A&M is committed to achieving Imperative 6: "Globalize and Diversify the Campus."

The International Programs Office is the centralized unit responsible for coordinating and promoting Texas A&M's numerous international activities. Its goal is to infuse an international dimension into the teaching, research and public service programs of the University. This is accomplished both through academic and professional training and by creating a global awareness through on and off-campus programs. In addition, each College at Texas A&M University has international programs and activities available to students, faculty and staff. International Programs for Students is comprised of four academic support offices that facilitate international education: International Student Services, Sponsored Student Programs, Study Abroad Programs and The Santa Chiara Study Center in Italy. This report includes statistical information about all these.

According to *Open Doors 2004*, published by the Institute for International for International Education, the enrollment of international students and the number of students taking part in credit bearing Study Abroad Programs at Texas A&M University have increased. In 2002-2003 (the most recent national data available), Texas A&M University ranked thirty fifth in the U.S. among research institutions in the number of students earning credit when comparing data from the academic years 2002-2003. For Fall 2004, Texas A&M University ranked eleventh in the U.S. for the total number of enrolled international students.

However, there is an indication that these trends may not continue in 2004-2005 international students applications have decreased nation-wide while participation in study abroad programs has increased.

Please send any comments or suggestions that you might have regarding this report to our office.

Dr. Suzanne Droleskey  
Executive Director  
International Programs for Students

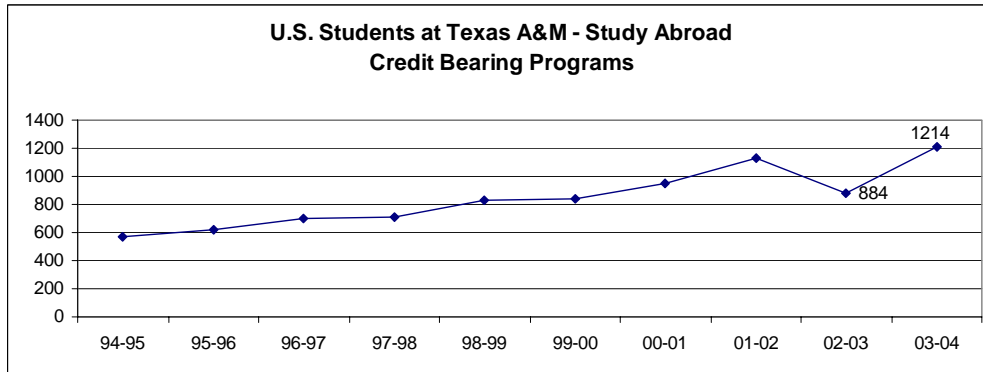
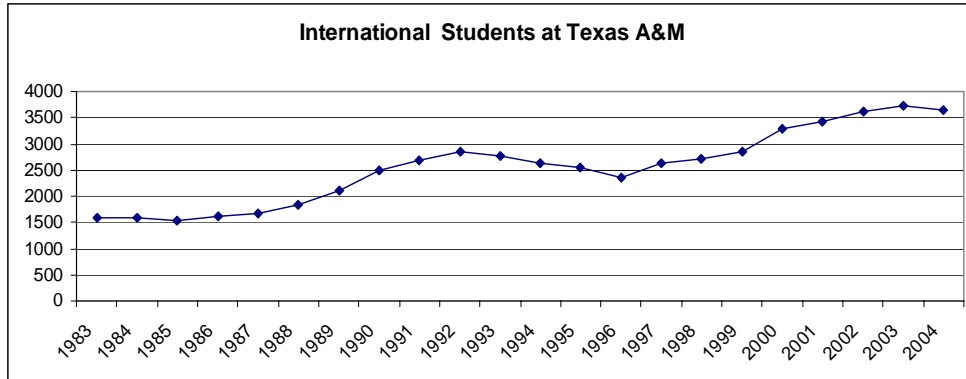
# TABLE OF CONTENTS

Executive Summary	2
Quick Reference	4
<b>International Students</b>	
Enrollment Trends	6
Leading Institution, Top 20 Doctoral / Research Institutions	7
Distribution of International Students by Degree Level	8
Distribution of International Students by College and Classification	9
Distribution of International Students by Gender	10
Distribution of International Students by Visa Type	10
Distribution of International Students by Geographic Origin	11
World Map Depicting International Students Profile	12
Enrollment Comparisons with Big 12, Vision 2020 and Texas Schools	13
Scholarships Statistics	14
<b>Study Abroad Programs</b>	
Enrollment Trends	15
Study Abroad Reciprocal Educational Exchange Programs Statistics	16
World Map Depicting Study Abroad Programs and Activities	17
Leading Institution, Top 40 Doctoral / Research Institutions	18
Enrollment Comparisons with Big 12, Vision 2020, and Texas Schools	19
Scholarships Statistics	20
<b>Sponsored Student Programs</b>	
Enrollment of Sponsored International Students	22
<b>Santa Chiara Study Center</b>	
Santa Chiara Study Center Statistics	23
Sources of Data & Contact Information	25

## Statistical Report Fall 2004

### Quick Reference

Source: International Institute for Education, Open Doors 2004



### Rankings of Texas A&M University 2002 -2004

	Texas A&M University International Student Enrollments		Texas A&M University Number of Students Earning Credit Abroad	
	2004	2003	2003	2002
U.S. Institutions	11 <sup>th</sup>	15 <sup>th</sup>	35 <sup>th</sup>	19 <sup>th</sup>
Texas Institutions	2 <sup>nd</sup>	2 <sup>nd</sup>	2 <sup>nd</sup>	2 <sup>nd</sup>
Big 12 Universities	2 <sup>nd</sup>	2 <sup>nd</sup>	6 <sup>th</sup>	2 <sup>nd</sup>
Vision 2020 Universities	3 <sup>rd</sup>	1 <sup>st</sup>	5 <sup>th</sup>	1 <sup>st</sup>

### Host Regions / Countries for Study Abroad - Texas A&M 2003 - 2004

	Student	Country
Europe	970	17
North America	184	2
Latin America	139	12
Oceania	77	2
Asia	33	7
Africa	27	5
Middle East	2	1
Multiple Countries	103	
<b>Total</b>	<b>1,535</b>	<b>46</b>



## **INTERNATIONAL STUDENT SERVICES**



International Student Services is the primary information source for federal regulations governing non-immigrant student visas, travel, financial assistance, orientation, and the local community.

Margit Garay  
Assistant Director

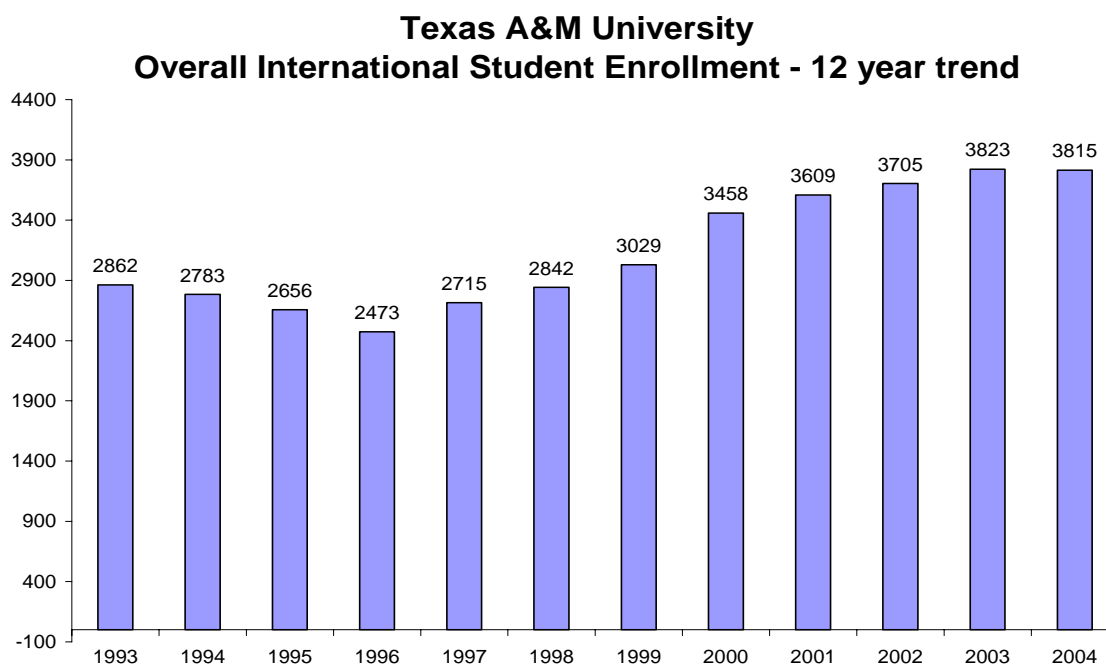
### **International Student Services**

1st Floor Bizzell Hall East  
1226 TAMU  
College Station, Texas  
77843-1226  
Phone: 979-845-1151

<http://international.tamu.edu/iss/>

## INTERNATIONAL STUDENTS ENROLLMENT TRENDS

In Fall 2004, the international student population at Texas A&M University decreased by 0.18%; whereas, the total number of international students in the US decreased by 2.4%. The total of the international students as percentage of the student body at Texas A&M University has been fairly constant from Fall 2003 to Fall 2004 at 8.4%, as reported by the Institute for International Education, in the annual Open Doors report.



Source: Institute for International Education, Open Doors 2004

### Comparison of Texas A&M University Enrollment of International Students as compared to National Enrollment Data

Academic Year	All Schools	% Change	Texas A&M University	% Change
1993	449,749	2.5	2,783	-2.76
1994	452,653	0.6	2,656	-4.56
1995	453,787	0.3	2,473	-6.89
1996	457,984	0.9	2,715	9.79
1997	481,280	5.1	2,842	4.68
1998	490,933	2	3,029	6.58
1999	514,723	4.8	3,458	14.16
2000	547,867	6.4	3,609	4.37
2001	582,996	6.4	3,705	2.66
2002	586,323	0.6	3,822	3.16
2003	572,509	-2.4	3,815	-0.18

Source: Institute for International Education, Open Doors 2004

**Leading Institutions by Total Number of International Students  
Top 20 Research Institutions Fall 2004**

	<i>Institution</i>	<i>City</i>	<i>State</i>	<i>Total Int'l Students</i>	<i>Total Enrollment</i>
1	University of Southern California	Los Angeles	CA	6,647	31,606
2	Columbia University	New York	NY	5,362	23,609
3	Purdue University, Main Campus	West Lafayette	IN	5,094	38,847
4	New York University	New York	NY	5,070	38,188
5	University of Texas at Austin	Austin	TX	4,827	51,426
6	University of Illinois at Urbana-Champaign	Champaign	IL	4,769	38,747
7	University of Michigan – Ann Arbor	Ann Arbor	MI	4,583	39,031
8	Boston University	Boston	MA	4,518	29,049
9	University of California – Los Angeles	Los Angeles	CA	4,320	38,598
10	The Ohio State University, Main Campus	Columbus	OH	4,263	50,731
<b>11</b>	<b>Texas A&amp;M University</b>	<b>College Station</b>	<b>TX</b>	<b>3,815</b>	<b>44,813</b>
12	University of Maryland College Park	College Park	MD	3,726	35,329
13	Indiana University at Bloomington	Bloomington	IN	3,715	38,589
14	Penn State University – University Park	University Park	PA	3,693	41,445
15	SUNY at Buffalo	Buffalo	NY	3,664	27,275
16	University of Pennsylvania	Philadelphia	PA	3,557	22,769
17	University of Wisconsin – Madison	Madison	WI	3,435	41,507
18	Harvard University	Cambridge	MA	3,403	19,690
19	Florida International University	Miami	FL	3,397	33,401
20	University of Houston	Houston	TX	3,368	34,699

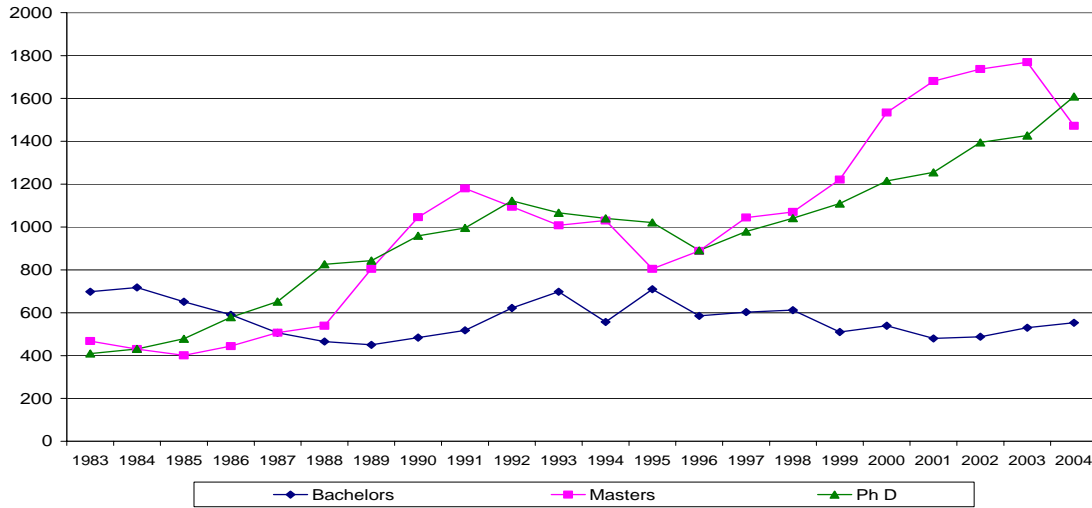
Source: International Institute for Education, Open Doors 2004

## INTERNATIONAL STUDENTS

### DISTRIBUTION OF INTERNATIONAL STUDENTS BY DEGREE LEVEL

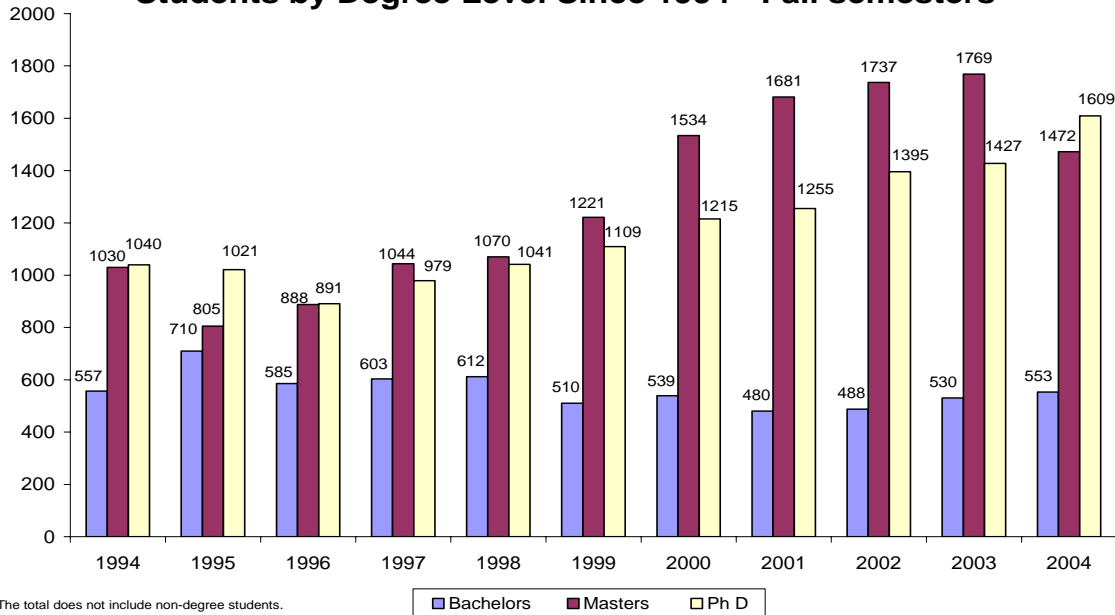
Over the last twenty years, the distribution of international students has changed dramatically. Undergraduates are no longer the largest group of international students and currently their total is less than 14.5% of the 3,815 enrolled for Fall 2004. For the first time in the last 9 years the total number of international students seeking a Ph.D. is higher than those pursuing a Masters.

**Texas A&M University Distribution of International Students by Degree Level since 1983 - Fall Semesters**



\* The total does not include the non-degree students.

**Texas A&M University Distribution of Overall International Students by Degree Level Since 1994 - Fall semesters**



The total does not include non-degree students.

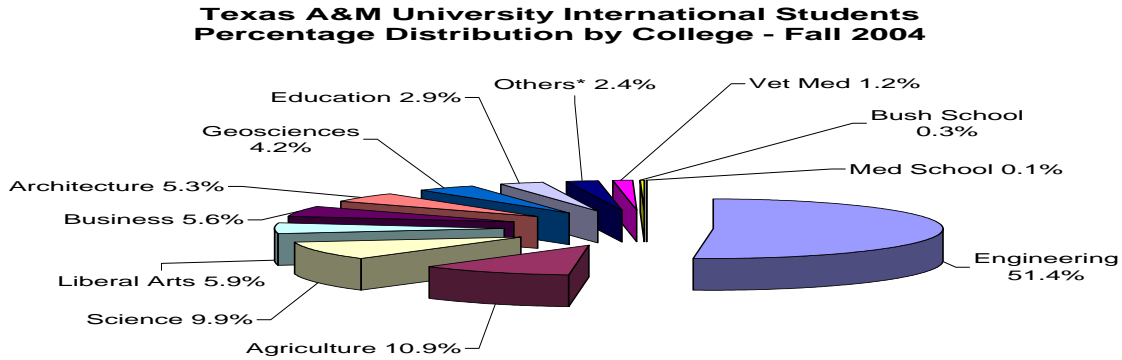


## INTERNATIONAL STUDENTS

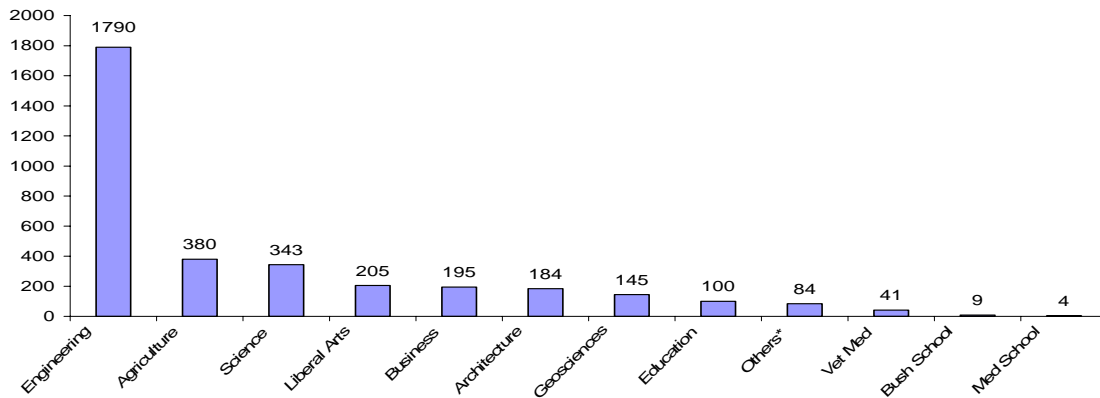
### DISTRIBUTION OF INTERNATIONAL STUDENTS BY COLLEGE

Source: Texas A&M Office of Institutional Studies and Planning (OISP)

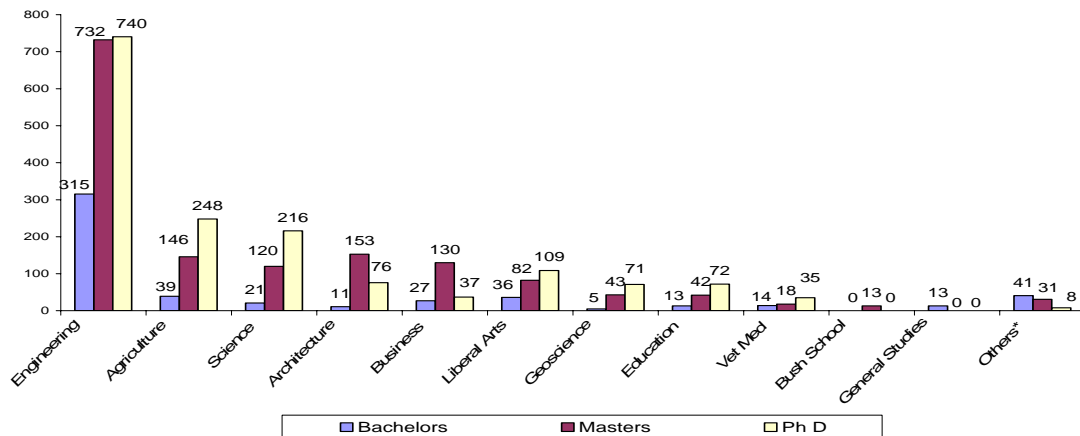
In the 1960s the largest number of international students was in the College of Agriculture. That trend has changed drastically. In Fall 2004 only 5.3% were enrolled in the College of Agriculture while 51.4% were enrolled in engineering programs.



### Texas A&M International Students Distribution by Colleges Fall 2004



### Texas A&M University International Student Distribution by College and Classification - Fall 2004



\* Others include Reciprocal Exchange, General Academics, Interdisciplinary studies and Marie Biology

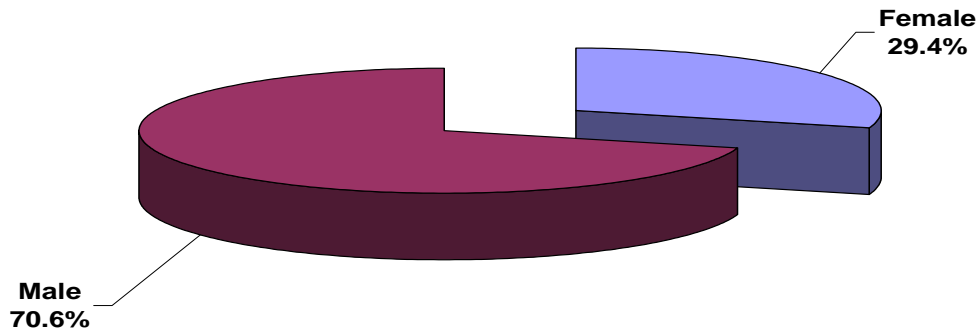
## INTERNATIONAL STUDENTS

### DISTRIBUTION OF INTERNATIONAL STUDENTS BY GENDER AND VISA TYPE

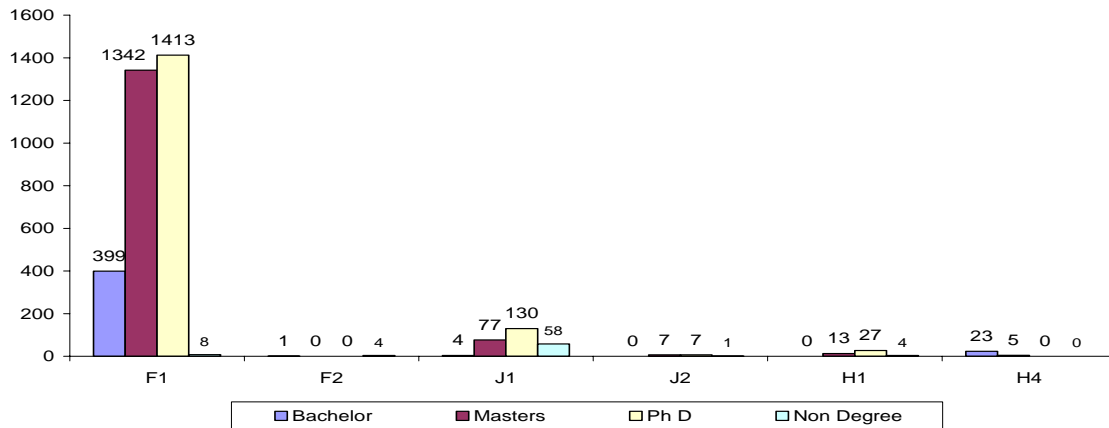
Source: Texas A&M Office of Institutional Studies and Planning (OISP)

The majority of Texas A&M students have always been male, although the percentage of females has increased slowly over the years. While the majority of the students pursue their educational goals as F-1 visa holders, there are other visa holders enrolled. In fact there are some full time employees, H-1.

**Texas A&M University  
Distribution of all International Students by Gender - Fall**



**Texas A&M University  
Distribution of Students with F, J and H Visas - Fall 2004**



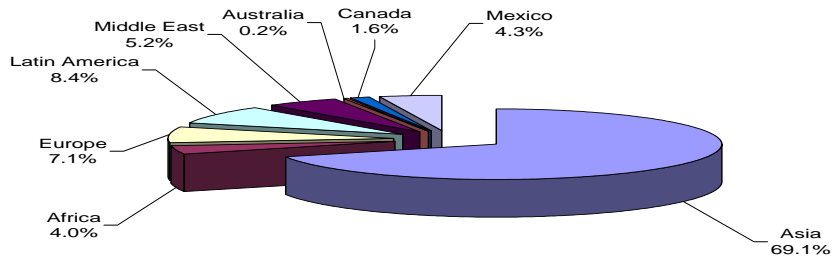
## INTERNATIONAL STUDENTS

### DISTRIBUTION OF INTERNATIONAL STUDENTS BY GEOGRAPHIC ORIGIN

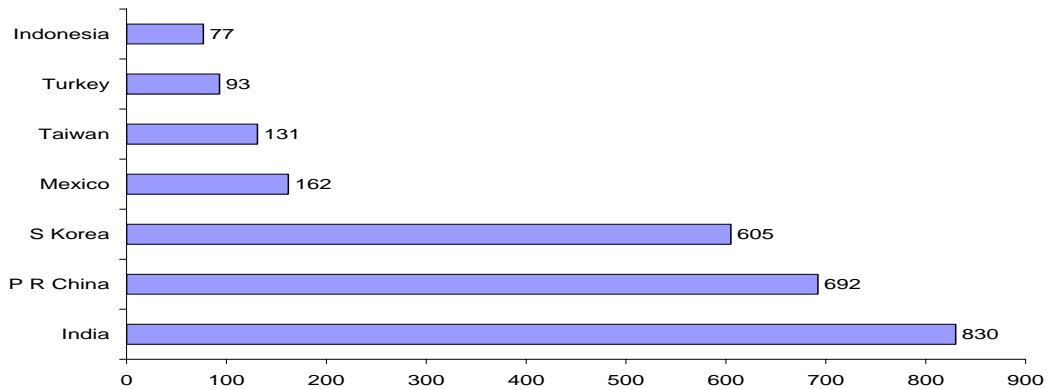
Source: Texas A&M Office of Institutional Studies and Planning (OISP)

Geographically, Texas A&M University's international student population mirrors national demographics, with the largest number of students coming from Asia. Although, in Fall 2004, 127 countries are represented, the top three countries, India, P.R. China and South Korea have been among the top five countries represented by international students at Texas A&M for nearly a decade. The vast majority of students from the Middle East and Turkey are sponsored international students.

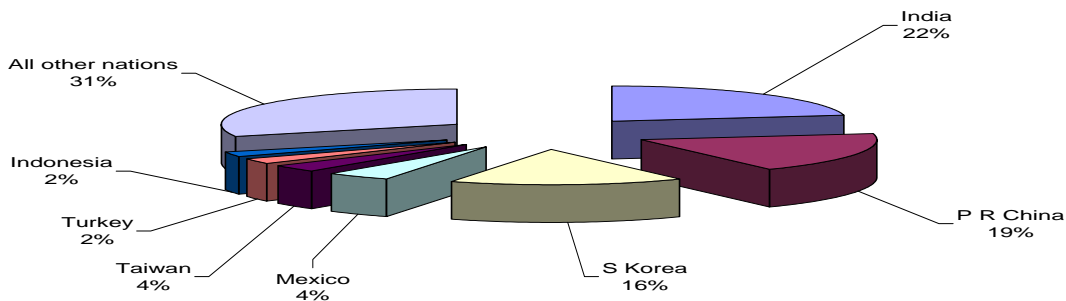
**Texas A&M University Geographic Distribution of all International Students - Fall 2004**



**Texas A&M University - Top 7 Countries Represented by International Students - Fall 2004**



**Texas A&M University International Student Percentage Distribution by Country - Fall 2004**



INTERNAIONAL STUDENTS  
WORLD MAP DEPICTING TEXAS A&M UNIVERSITY  
INTERNATIONAL STUDENT PROFILE – Fall 2004

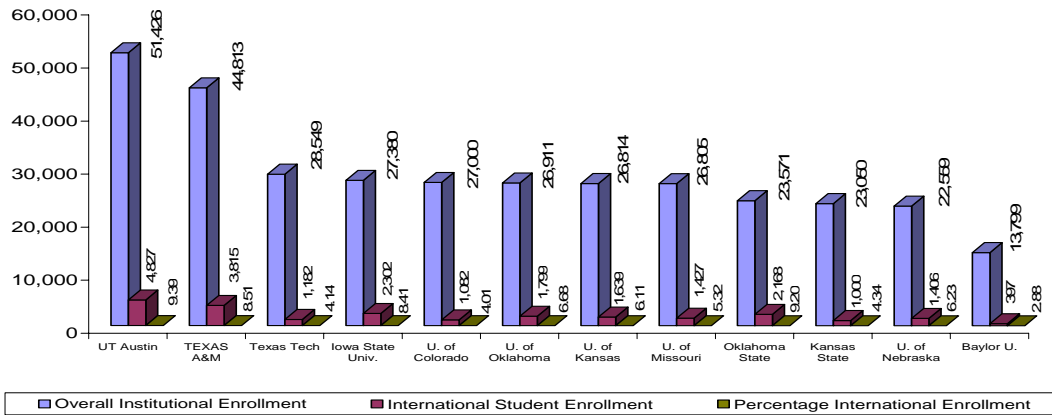
[Click Here To View](#)

## INTERNATIONAL STUDENTS

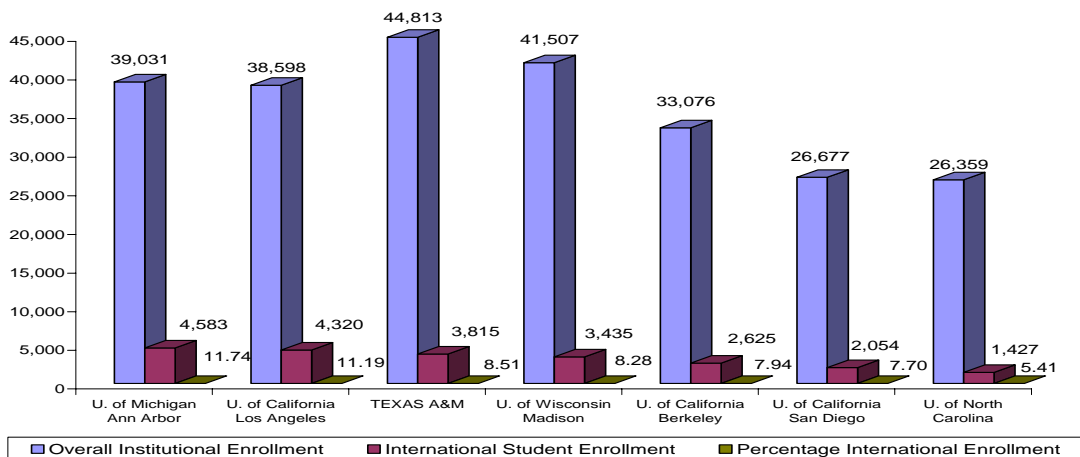
### ENROLLMENT COMPARISONS WITH BIG 12, VISION 2020, AND TEXAS SCHOOLS

Source: Institute for International Education, Open Doors 2004

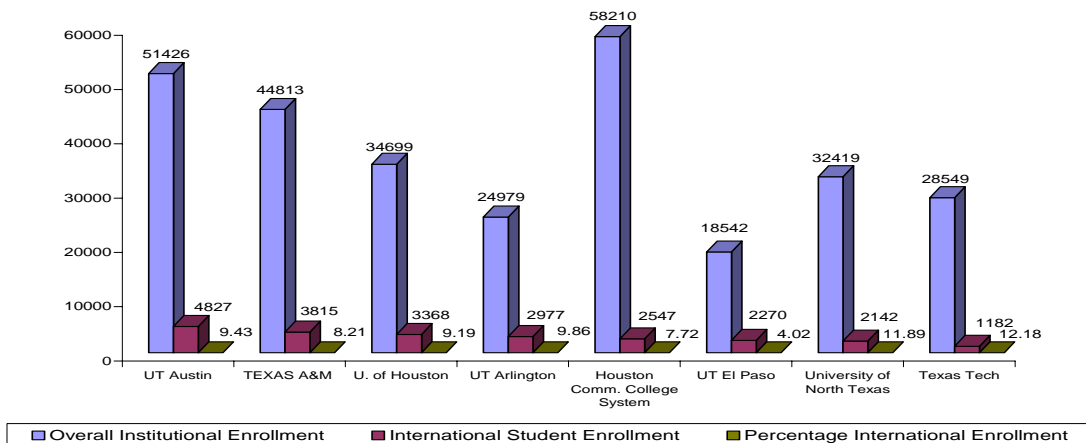
**Texas A&M University International Student Enrollment  
Big 12 Universities - Fall 2004**



**Texas A&M University International Student Enrollment  
Vision 2020 Schools - Fall 2004**



**Texas A&M University International Student Enrollment  
Texas Schools - Fall 2004**





Study Abroad Programs helps facilitate academic programs, volunteer positions, internships and exchange programs around the world.

Cathy Schutt  
Assistant Director

**Study Abroad Programs Office**

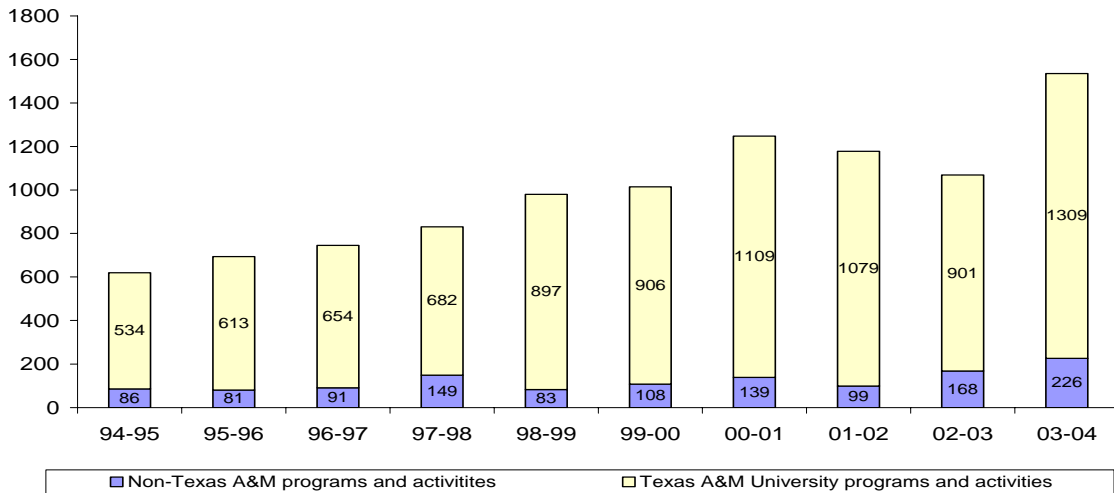
1st Floor Bizzell Hall West  
1226 TAMU  
College Station, Texas  
77843-3262  
Phone: 979-845-0544  
<http://studyabroad.tamu.edu/>

## STUDY ABROAD PROGRAMS ENROLLMENT TRENDS

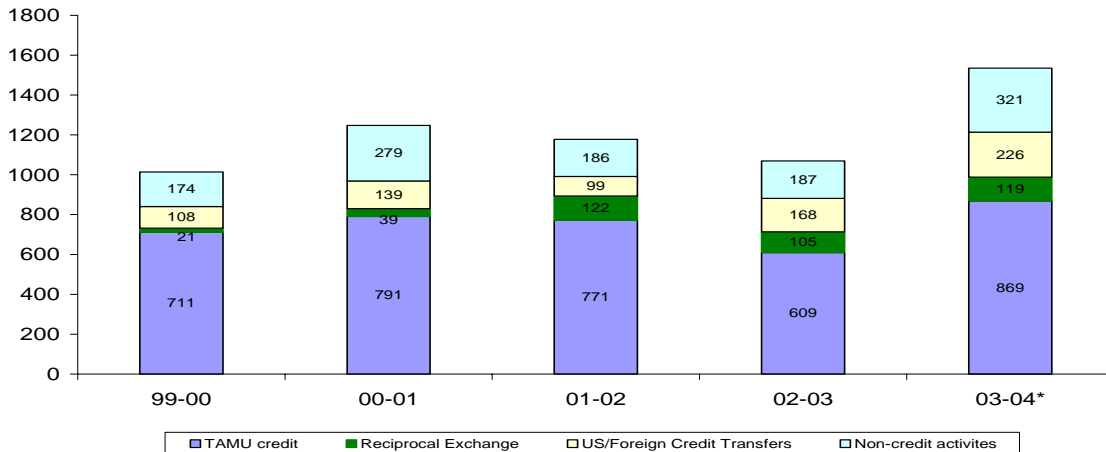
Source: Texas A&M Study Abroad Office Records

The largest number of Texas A&M students who study, work, research, or travel outside the United States are undergraduate students taking part in faculty-led group programs. The total number of students studying independently abroad has increased consistently since 1989 to an all time high of 226 in 2004, primarily due to the elimination of administrative barriers that make independent programs complex and access to advising specifically for these students. In addition, Texas A&M also increased the total faculty-led programs available to students for studying abroad and these programs are initially seeing a rebound after decreased enrollment post September 11, 2001. Non-credit activity level has primarily increased through college efforts to engage freshmen learning communities in international experiences.

### Students Participating in Programs and Activities Outside the U.S. - 10 year trend



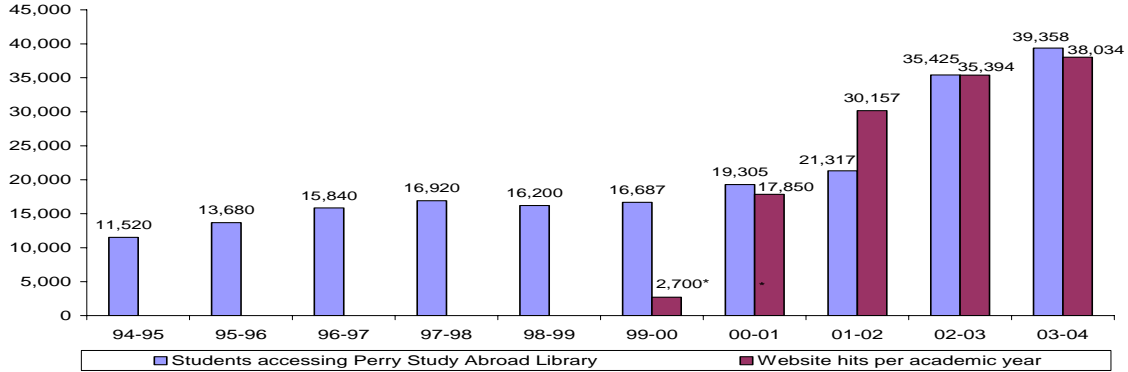
### Detailed Breakdown of Student Participation in Programs and Activities Outside the U.S. - 5 year trend



\* Data incomplete at this time

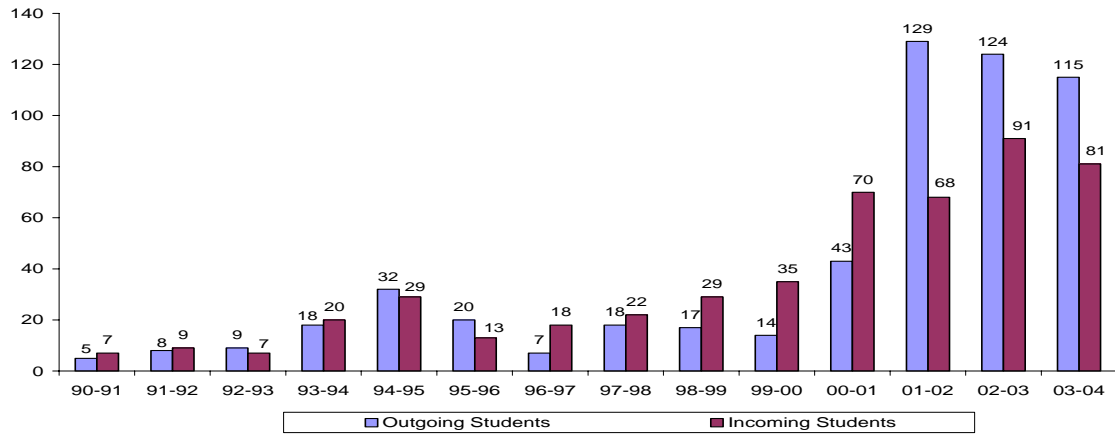
**STUDY ABROAD PROGRAMS**  
**SERVICES AND RECIPROCAL EDUCATIONAL EXCHANGE PROGRAM**

**Students Accessing Services in the Study Abroad Programs Office - 9 year trend**

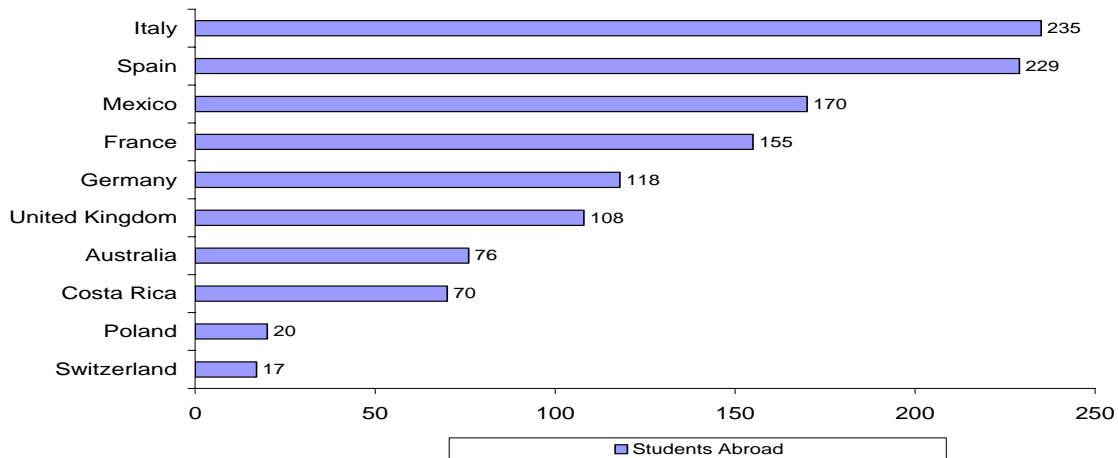


\* This figure only reflects a 4 month period, when the new website went online

**Reciprocal Educational Exchange Program Summary for 1991-2004**



**Top 10 International Destinations of Texas A&M Students 2003-2004**





**STUDY ABROAD PROGRAMS**  
**WORLD MAP DEPICTING GLOBAL PARTICIPATION OF TEXAS A&M STUDENTS**  
**IN STUDY ABROAD PROGRAMS / ACTIVITIES**

[Click Here To View](#)

**STUDY ABROAD PROGRAMS**  
**NATIONAL COMPARISONS**

**Leading Institutions by Total Number of Study Abroad Students**

**TOP 40 Research Institutions 2002-2003**

	<i>Institution</i>	<i>2002-2003</i>	<i>2001-2002</i>	<i>% Change</i>
1	New York University	2,061	1,872	0.10
2	University of California, Los Angeles	1,917	502	2.82
3	Michigan State University	1,864	1,819	0.02
4	University of Texas at Austin	1,654	1,591	0.04
5	University of Arizona	1,466	1,326	0.11
6	University of Wisconsin - Madison	1,441	1,340	0.08
7	University of North Carolina Chapel Hill	1,426	1,266	0.13
8	University of Georgia	1,401	1,268	0.10
9	Indiana University at Bloomington	1,379	1,245	0.11
10	University of Illinois Urbana - Champaign	1,377	1,216	0.13
11	Boston University	1,369	1,330	0.03
12	University of Florida	1,357	1,121	0.21
13	Penn State University Park Campus	1,351	1,270	0.06
14	University of Minnesota -Twin Cities	1,294	1,219	0.06
15	Georgetown University	1,290	1,412	-0.09
16	Arizona State University	1,278	1,194	0.07
17	University of Pennsylvania	1,228	1,461	-0.16
18	Ohio State University Main Campus	1,227	1,156	0.06
19	Miami University - Oxford	1,208	1,160	0.04
20	University of Southern California	1,207	1,211	0.00
21	University of Notre Dame	1,181	1,161	0.02
22	University of Delaware	1,180	923	0.28
23	Syracuse University	1,116	947	0.18
24	University of Michigan - Ann Arbor	1,103	985	0.12
25	University of Washington	1,100	1,118	-0.02
26	Cornell University	1,077	932	0.16
27	University of Colorado at Boulder	1,064	1,114	-0.04
28	University of Kansas	1,040	929	0.12
29	University of Virginia-Main Campus	1,019	923	0.10
30	Florida State University	950	1,114	-0.15
31	University of Pittsburgh Main Campus	939	870	0.08
32	Iowa State University of Science & Technology	915	880	0.04
33	Brigham Young University	905	1,123	-0.19
34	University of Maryland College Park	893	689	0.30
<b>35</b>	<b>Texas A&amp;M University</b>	<b>884</b>	<b>1,130</b>	<b>-0.22</b>
36	Duke University	868	943	-0.08
37	George Washington University	865	964	-0.10
38	Boston College	851	639	0.33
39	University of California - San Diego	848	696	0.22
40	Tulane University	843	548	0.54

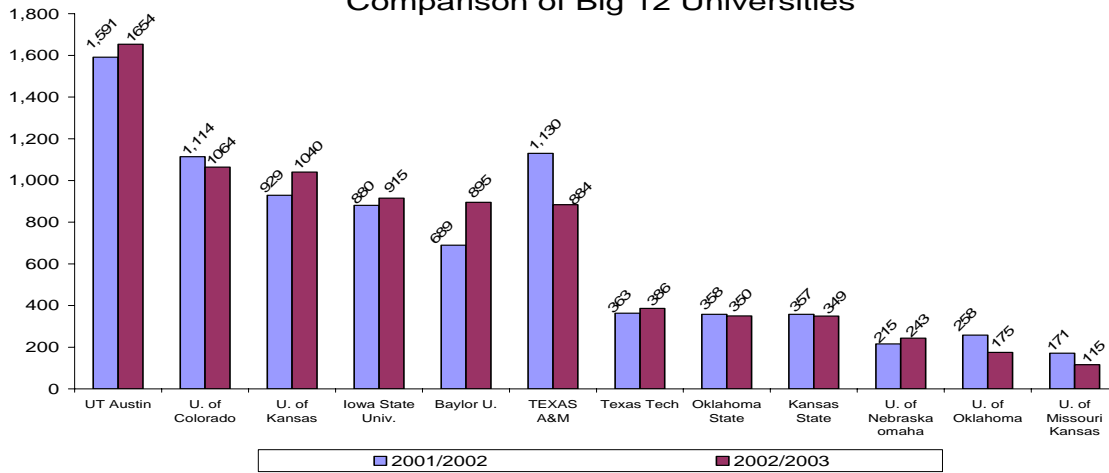
Source: Institute for International Education Open Doors 2004  
 IIE Open Doors Survey considers only credit activities and programs to determine enrollment.

## STUDY ABROAD PROGRAMS

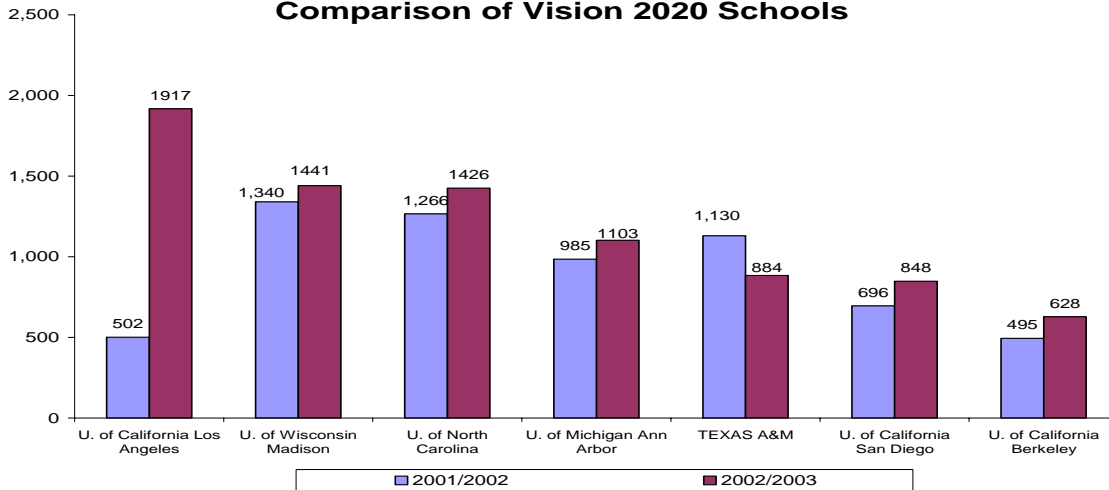
### ENROLLMENT COMPARISON WITH BIG 12, VISION 2020, AND TEXAS SCHOOLS

Source: Institute for International Education Open Doors 2004

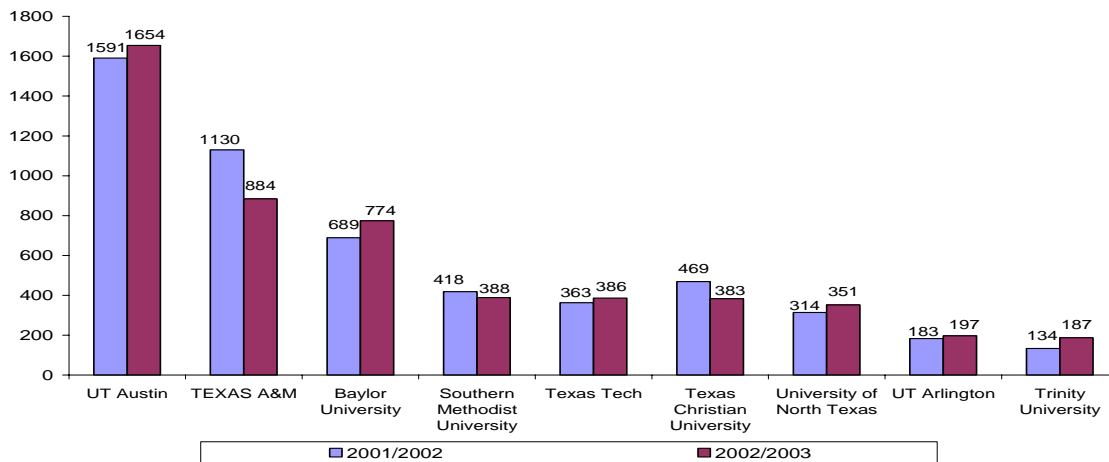
**Study Abroad Enrollment 2001-2003  
Comparison of Big 12 Universities**



**Study Abroad Enrollment 2001-2003  
Comparison of Vision 2020 Schools**



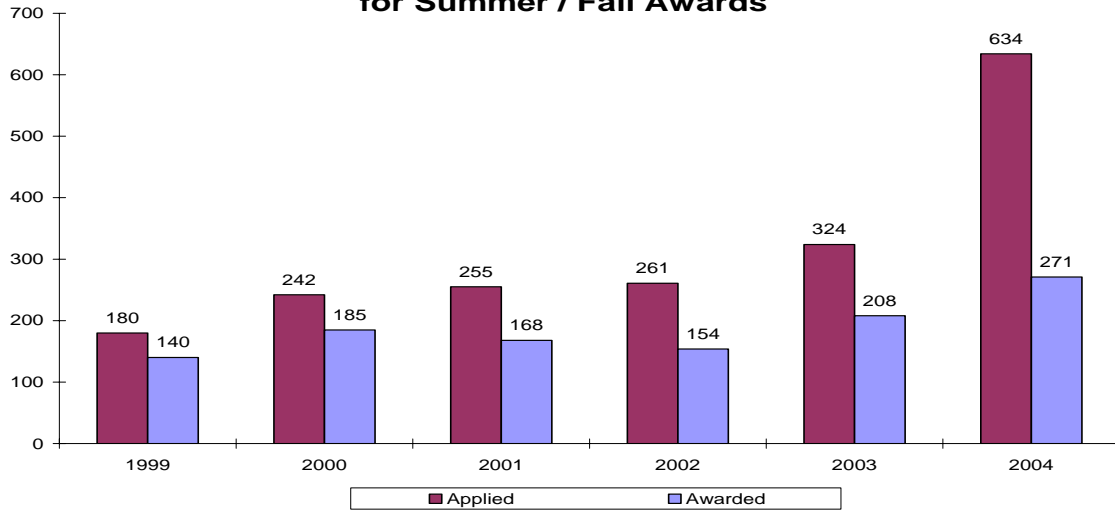
**Study Abroad Enrollment 2001-2003  
Comparison of Texas Schools**



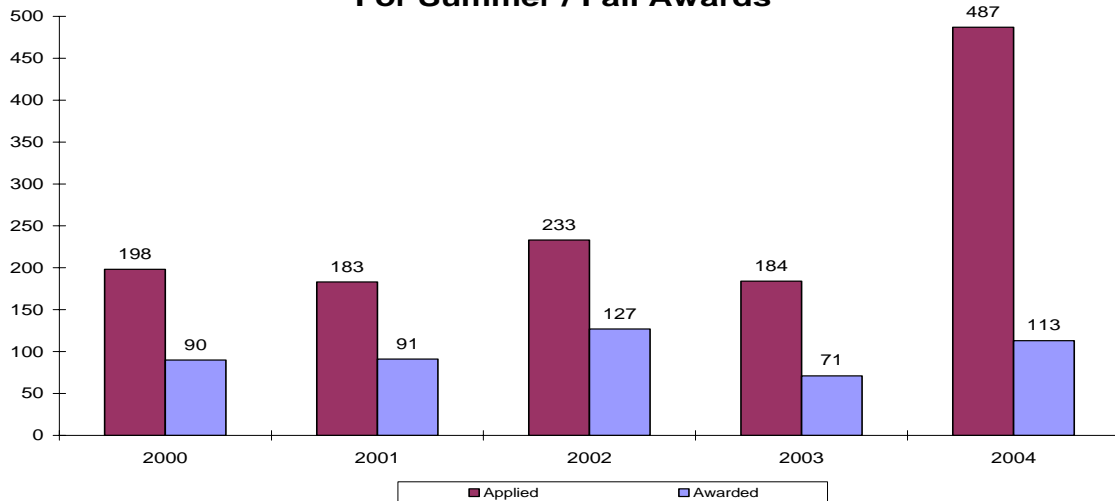
## STUDY ABROAD PROGRAMS SCHOLARSHIPS

Financial support is still one of the major barriers for students to pursue international education opportunities. Study Abroad Program oversees scholarships for international education, and the demand for these increased dramatically in 2004 with the advent of an online application. However, students also indicate an increasing need for scholarships with the continued devaluation of the U.S. Dollar to the Euro, since majority of Texas A&M chose to study in Europe

**International Educational Fee Scholarships  
for Summer / Fall Awards**



**Study Abroad Fellowships  
For Summer / Fall Awards**



## **SPONSORED STUDENT PROGRAMS**

Sponsored Student Programs provides international students sponsored by governments, businesses or other agencies special assistance with admission, pre-arrival information, academic program arrangements and billing, and liaison services with various entities.

Violetta Burke Cook  
Director

### **Sponsored Student Programs Office**

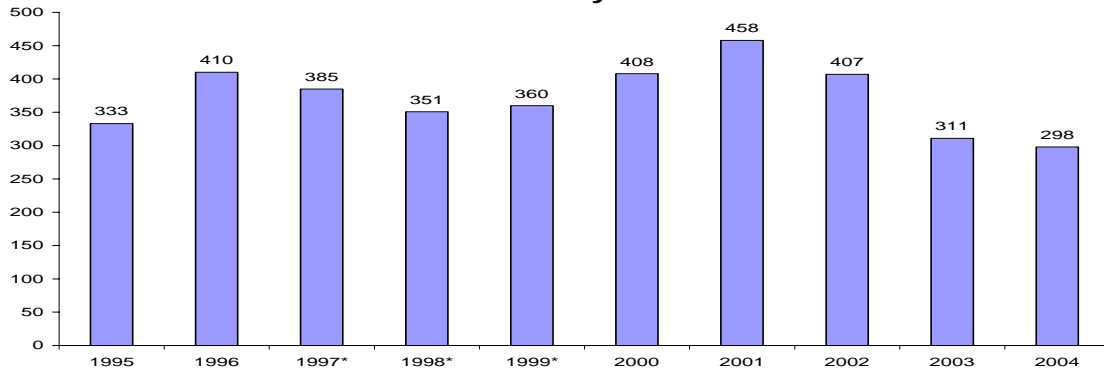
255 Bizzell Hall West  
1226 TAMU  
College Station, Texas  
77843-1226  
Phone: 979-845-2550  
<http://ssp.tamu.edu/index.aspx/>

## SPONSORED STUDENT PROGRAMS

### ENROLLMENT TRENDS

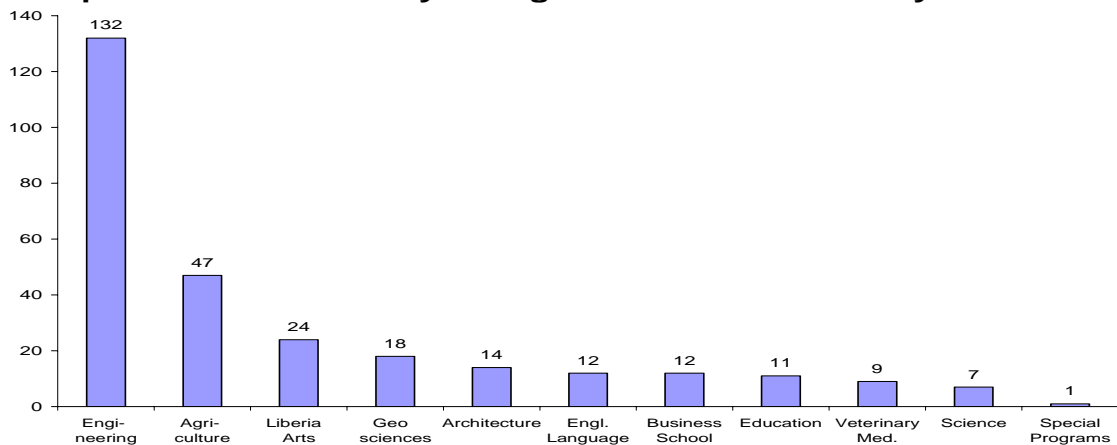
September 11, 2001 had a dramatic impact on the sponsored student population since so many students from Arab and Muslim nations either chose to study in other countries, found it impossible to obtain a U.S. visa in a timely manner, or anticipated an unwelcome environment in our country. Despite this, application for Fall 2005 from these students, unlike the general international student population, have increased. Therefore, the enrollment of sponsored students will likely increase in 2005.

**Number of Sponsored International Students Attending Texas A&M University - Fall 1995-2004**

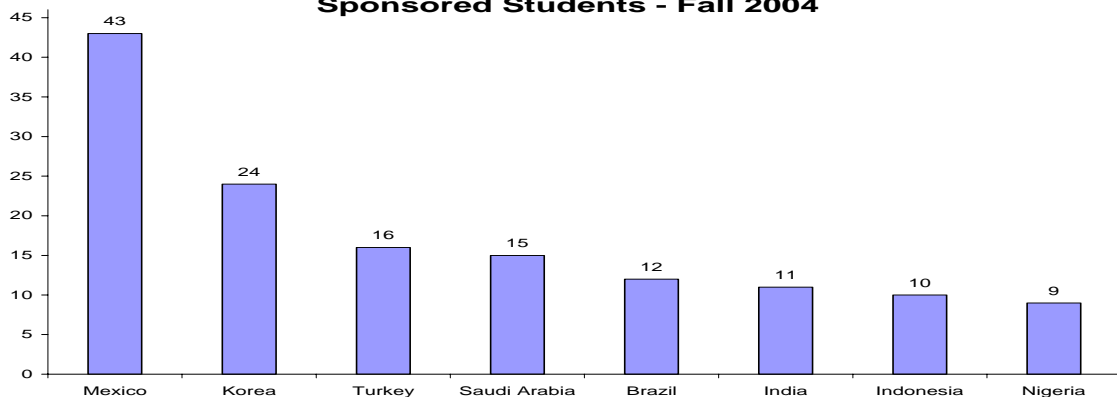


\*reflects incomplete data

**Sponsored Students by College Texas A&M University - Fall 04**



**Texas A&M University - Top 8 Countries Represented by Sponsored Students - Fall 2004**





The Santa Chiara Study Center in Italy is the University's focal point in Europe, hosting academic programs year-round.

Paolo Barucchieri  
Director

**Santa Chiara Study Center**

1st Floor Bizzell Hall West

1226 TAMU

College Station, Texas

77843-3262

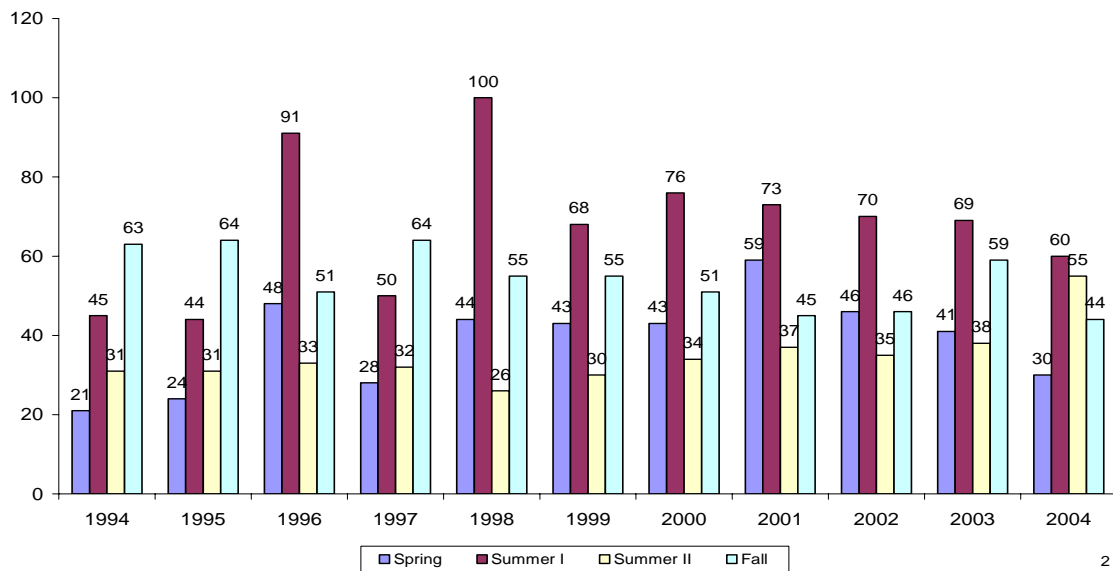
Phone: 979-845-0544

[http://studyabroad.tamu.edu/santa\\_chiara/](http://studyabroad.tamu.edu/santa_chiara/)

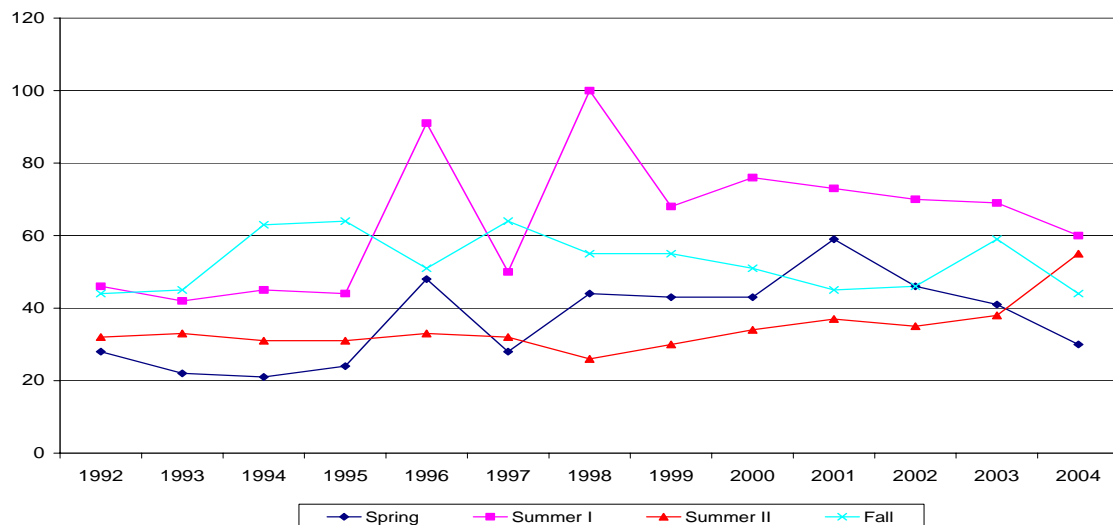
## SANTA CHIARA STUDY CENTER ENROLLMENT TRENDS

Texas A&M University students studied in forty six countries in 2003-2004. However, the most popular destination is Italy due to programs offered at the University's Santa Chiara Study Center in Castiglion Fiorentino, Italy. Over 2,000 students have participated in engineering, architecture, business, education and liberal arts programs since the center's opening. All students study Italian arts and civilization while at the Center; other courses rotate based on selected faculty proposals.

### Santa Chiara Study Center Enrollment 1994-2004



### Santa Chiara Study Center Enrollment 1992-2004





## SOURCES OF DATA

- ✚ 'Open Doors' reports released by the Institute Of International Education (IIE)
  
- ✚ Texas A&M Office of Institutional Studies and Planning (OISP)
  
- ✚ Texas A&M International Student Services records
  
- ✚ Texas A&M Study Abroad Office records

## CONTACT INFORMATION

This report can be found at:

<http://international.tamu.edu/ipo/ips.html>

### **International Programs for Students**

Administrative Office  
1<sup>st</sup> Floor Bizzell Hall East  
1226 TAMU  
College Station, Texas 77843-1226  
Phone: 979-458-3575  
Fax: 979-458-3623